



Manuscript

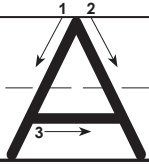
---

# Handwriting Practice

---

Blackline Masters

## Uppercase A



1. Slant left
2. Slant right
3. Slide right

Trace and write the letter.

Tracing practice for uppercase letter A. The first row shows a solid A with stroke order arrows, a dashed A with stroke order arrows, a dashed A, and a dotted A. The second row shows a dashed A with stroke order arrows and a dashed A. The third row shows a dashed A and a dotted A. Below these are two sets of blank handwriting lines for independent practice.

## Lowercase a

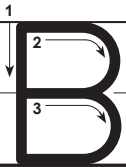


1. Circle left
2. Pull down straight

Trace and write the letter.

Tracing practice for lowercase letter a. The first row shows a solid a with stroke order arrows, a dashed a with stroke order arrows, a dashed a, and a dotted a. The second row shows a dashed a with stroke order arrows and a dashed a. The third row shows a dashed a and a dotted a. Below these are two sets of blank handwriting lines for independent practice.

### Uppercase **B**



1. Pull down straight
2. Slide right, curve down, slide left
3. Slide right, curve down, slide left

Trace and write the letter.

Tracing practice for uppercase letter B. The first row shows a solid B with stroke order arrows, followed by a faded B with stroke order arrows, and then a plain B. The second row shows a faded B with stroke order arrows and a plain B. The third and fourth rows show plain B's for independent practice.

### Lowercase **b**

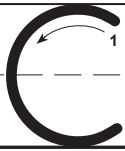


1. Pull down straight
2. Circle right

Trace and write the letter.

Tracing practice for lowercase letter b. The first row shows a solid b with stroke order arrows, followed by a faded b with stroke order arrows, and then a plain b. The second row shows a faded b with stroke order arrows and a plain b. The third and fourth rows show plain b's for independent practice.

Uppercase **C**



1. Circle left

Trace and write the letter.



Lowercase **c**

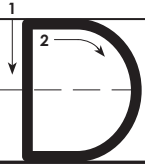


1. Circle left

Trace and write the letter.



### Uppercase **D**

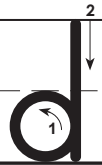


1. Pull down straight
2. Slide right, curve down, slide left

Trace and write the letter.

Tracing practice for uppercase letter D. The first row shows a solid D with stroke order arrows, followed by a dashed D for tracing, and then a series of dotted lines with starting dots. The second row shows a dashed D for tracing and a dotted line with a starting dot. The third row shows a dashed D for tracing. The fourth row is a blank line for independent writing.

### Lowercase **d**

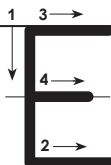


1. Circle left
2. Pull down straight

Trace and write the letter.

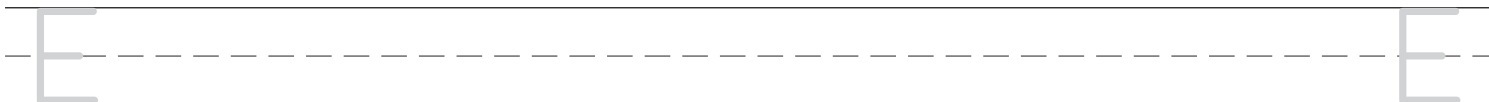
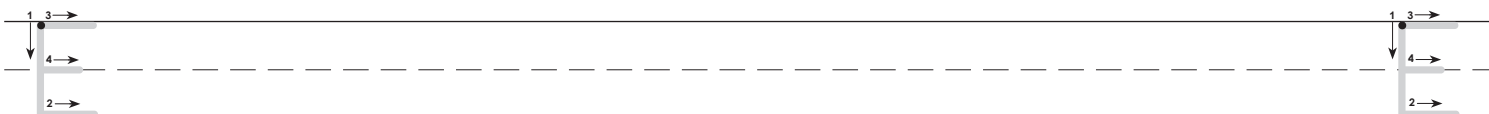
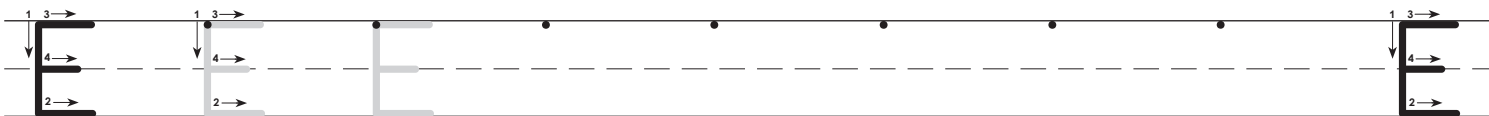
Tracing practice for lowercase letter d. The first row shows a solid d with stroke order arrows, followed by a dashed d for tracing, and then a series of dotted lines with starting dots. The second row shows a dashed d for tracing and a dotted line with a starting dot. The third row shows a dashed d for tracing. The fourth row is a blank line for independent writing.

### Uppercase E



1. Pull down straight
2. Slide right
3. Slide right
4. Slide right

Trace and write the letter.



### Lowercase e

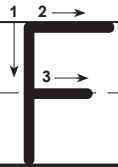


1. Slide right
2. Circle left

Trace and write the letter.



## Uppercase F



1. Pull down straight
2. Slide right
3. Slide right

Trace and write the letter.

Tracing practice for uppercase letter F. The first row shows a solid F with stroke order arrows, followed by a dashed F for tracing, and then a solid F. The second row shows a dashed F for tracing, followed by a solid F. The third and fourth rows are blank handwriting lines for independent practice.

## Lowercase f

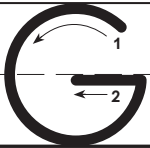


1. Curve left, pull down straight
2. Slide right

Trace and write the letter.

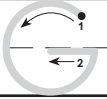
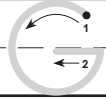
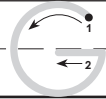
Tracing practice for lowercase letter f. The first row shows a solid f with stroke order arrows, followed by a dashed f for tracing, and then a solid f. The second row shows a dashed f for tracing, followed by a solid f. The third and fourth rows are blank handwriting lines for independent practice.

Uppercase **G**



1. Circle left
2. Slide left

Trace and write the letter.



Lowercase **g**



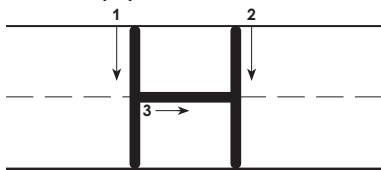
1. Circle left
2. Pull down straight, curve left

Trace and write the letter.



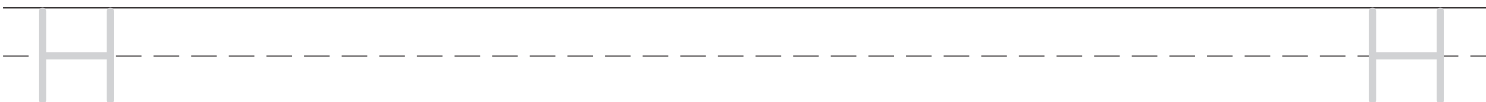
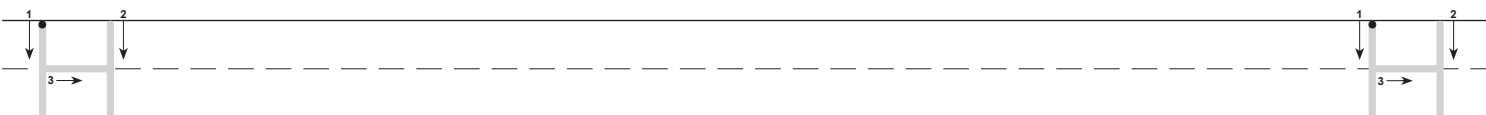
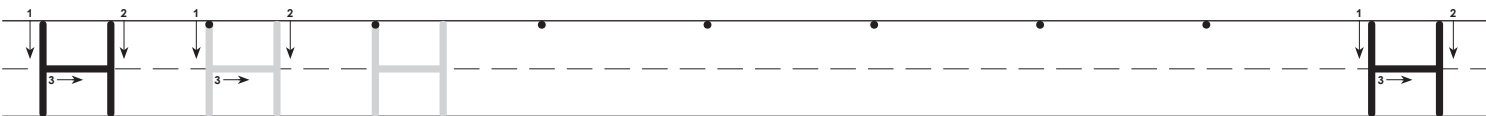


### Uppercase H

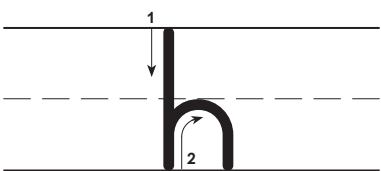


1. Pull down straight
2. Pull down straight
3. Slide right

Trace and write the letter.

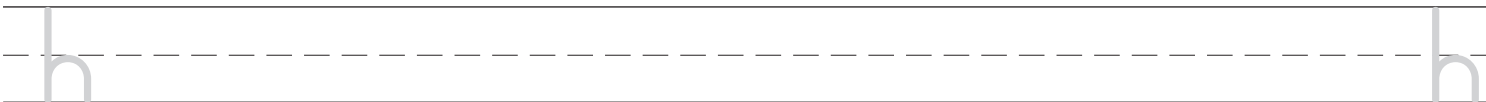
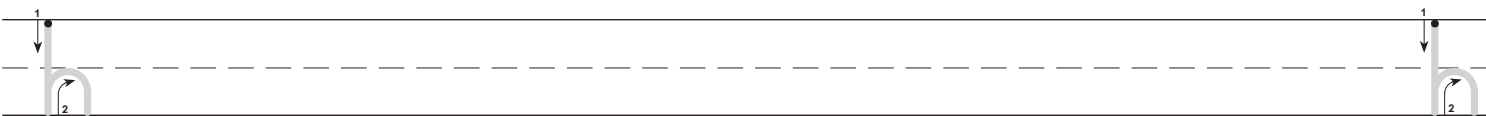
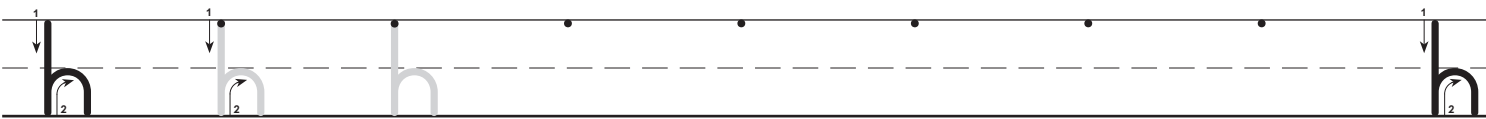


### Lowercase h



1. Pull down straight
2. Push up, curve right, pull down straight

Trace and write the letter.

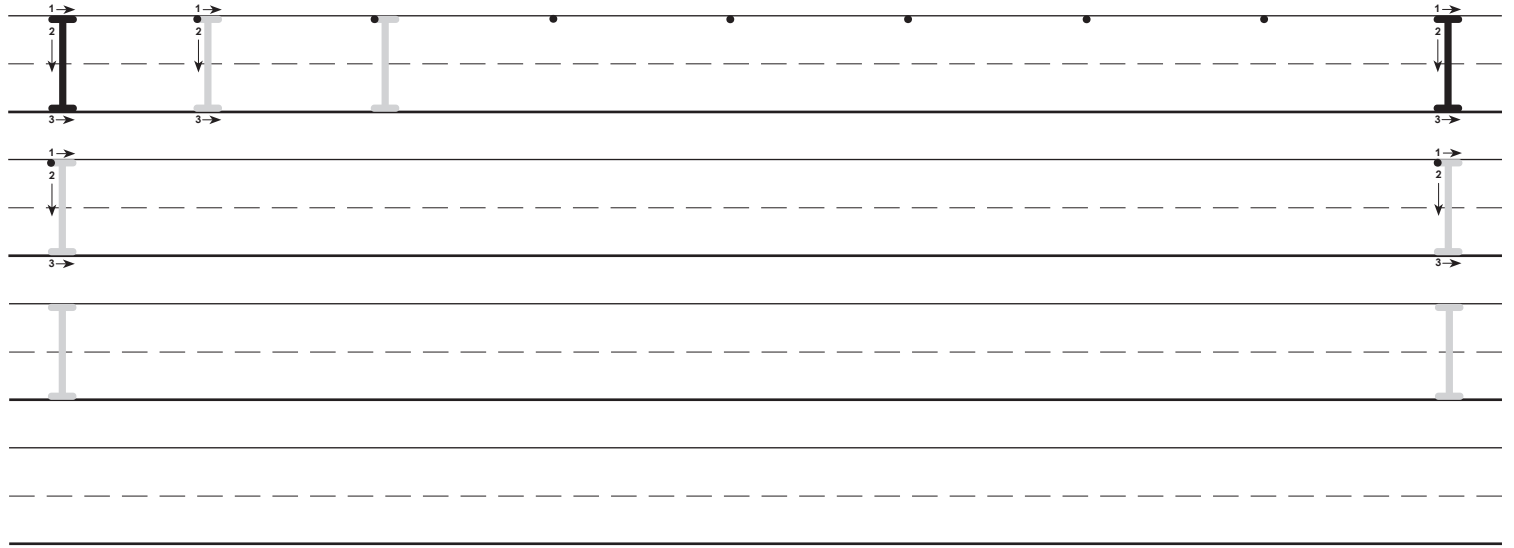


## Uppercase I



1. Slide right
2. Pull down straight
3. Slide right

Trace and write the letter.

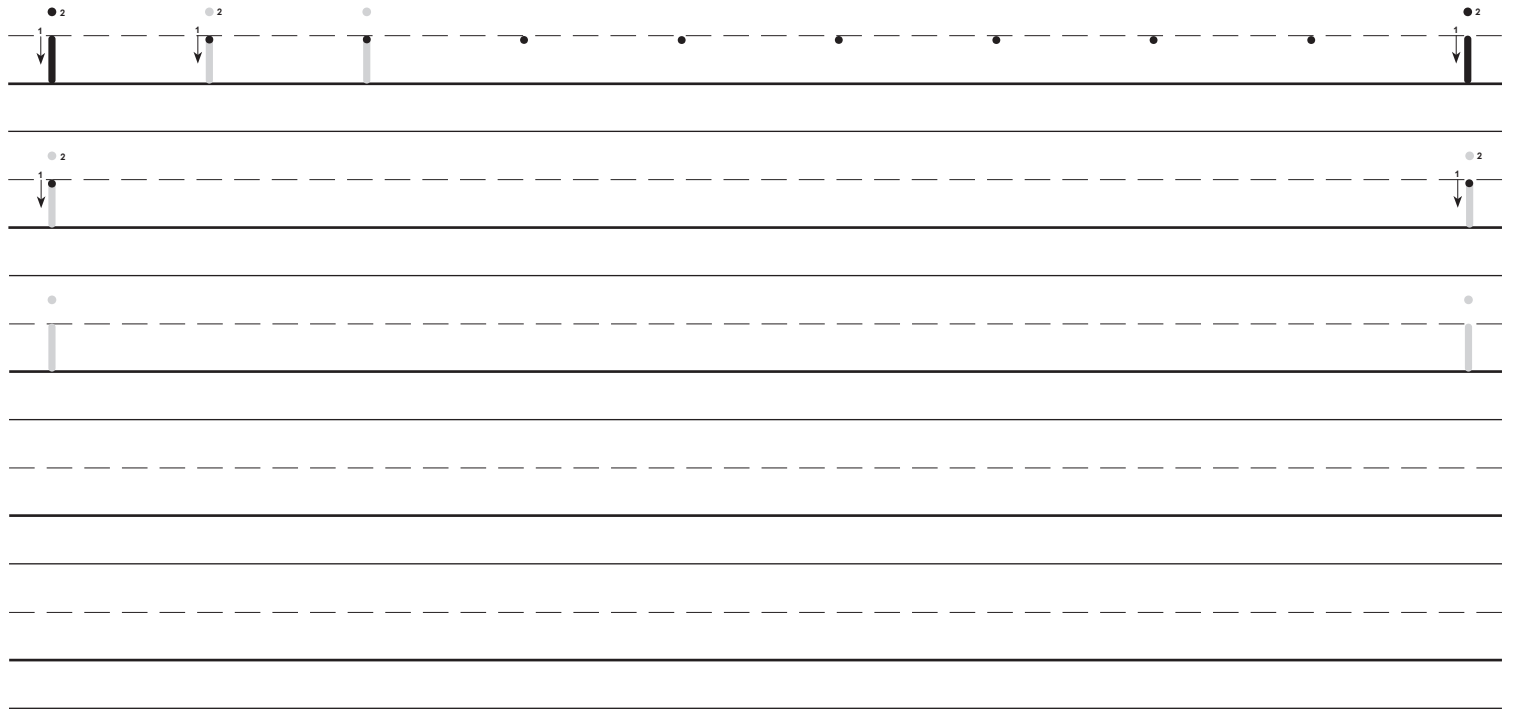


## Lowercase i

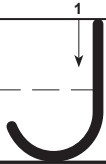


1. Pull down straight
2. Dot

Trace and write the letter.



Uppercase J

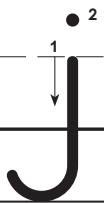


1. Pull down straight, curve left

Trace and write the letter.

Tracing practice for uppercase J. The first row shows a solid J with stroke order arrows, followed by a faded J with stroke order arrows, and then a series of faded J's on a set of three horizontal lines (top, middle-dashed, bottom). The second row shows a faded J with stroke order arrows, followed by a faded J, and then empty space on the lines. The third row shows a faded J, followed by empty space on the lines.

Lowercase j

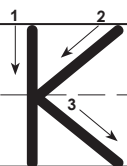


1. Pull down straight, curve left
2. Dot

Trace and write the letter.

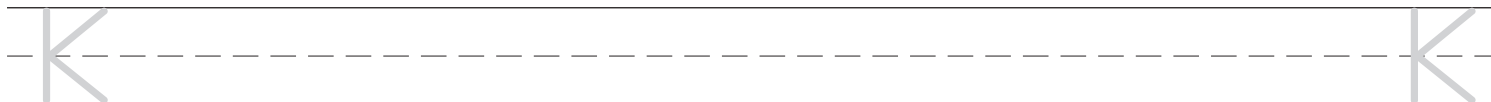
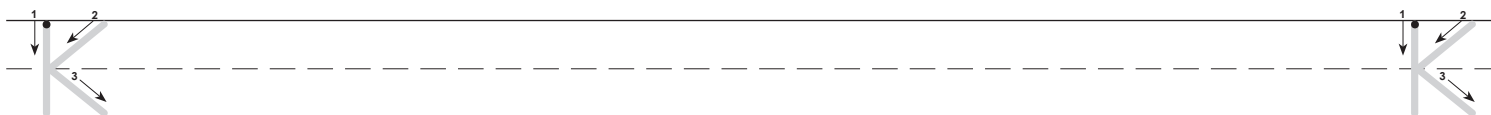
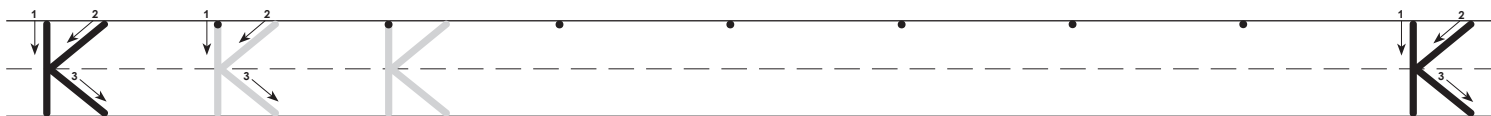
Tracing practice for lowercase j. The first row shows a solid j with stroke order arrows, followed by a faded j with stroke order arrows, and then a series of faded j's on a set of three horizontal lines (top, middle-dashed, bottom). The second row shows a faded j with stroke order arrows, followed by a faded j, and then empty space on the lines. The third row shows a faded j, followed by empty space on the lines.

### Uppercase K

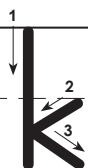


1. Pull down straight
2. Slant left
3. Slant right

Trace and write the letter.

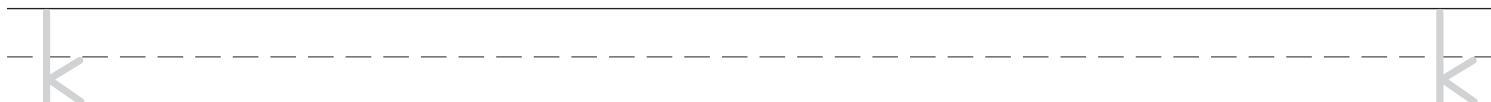
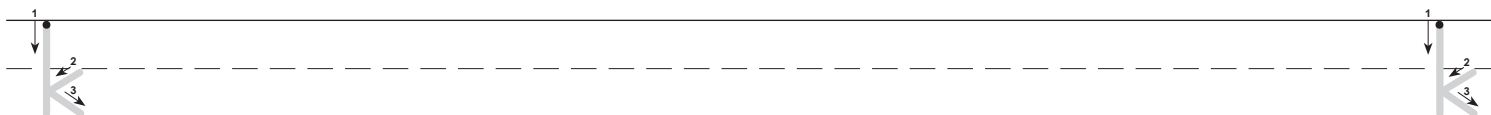
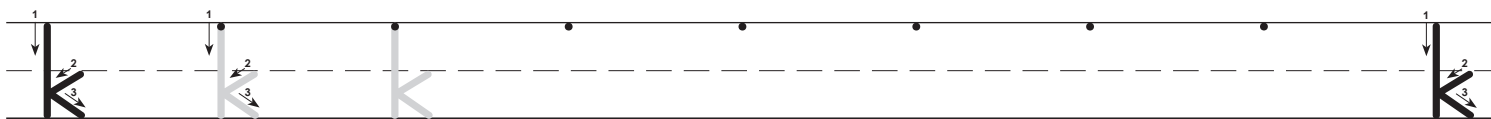


### Lowercase k

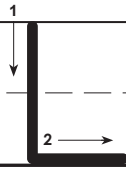


1. Pull down straight
2. Slant left
3. Slant right

Trace and write the letter.



### Uppercase L



1. Pull down straight
2. Slide right

Trace and write the letter.

Tracing practice for uppercase letter L. The first row shows a solid L with stroke order arrows and numbers, followed by a dashed L for tracing, and then a solid L. The second row shows a dashed L for tracing, followed by a solid L. The third and fourth rows are blank handwriting lines for independent practice.

### Lowercase l

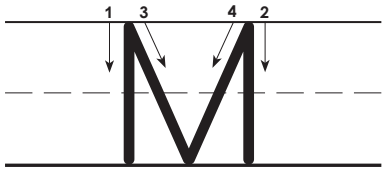


1. Pull down straight

Trace and write the letter.

Tracing practice for lowercase letter l. The first row shows a solid l with stroke order arrows and numbers, followed by a dashed l for tracing, and then a solid l. The second row shows a dashed l for tracing, followed by a solid l. The third and fourth rows are blank handwriting lines for independent practice.

### Uppercase M

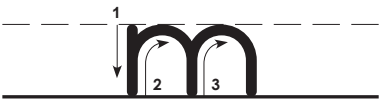


1. Pull down straight
2. Pull down straight
3. Slant right
4. Slant left

Trace and write the letter.

Tracing practice for uppercase M. The first row shows a solid M with stroke order arrows, followed by a dashed M, a solid M, and a dotted M. The second row shows a dashed M and a solid M. The third row shows a solid M. The fourth row is empty for independent practice.

### Lowercase m

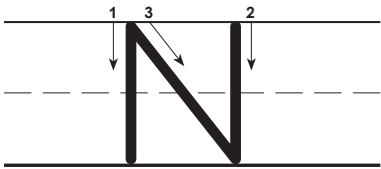


1. Pull down straight
2. Push up, curve right, pull down
3. Push up, curve right, pull down

Trace and write the letter.

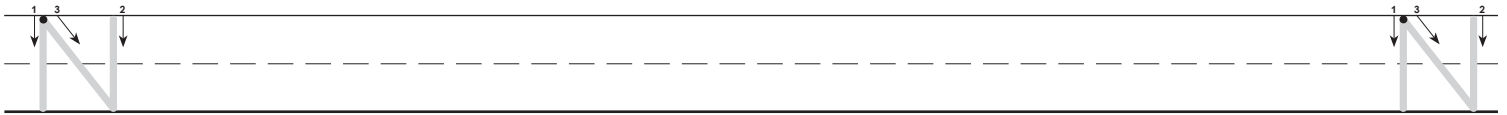
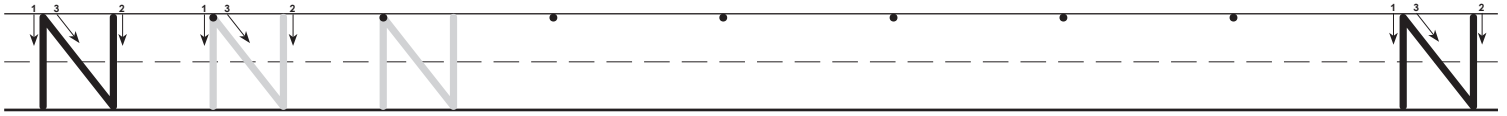
Tracing practice for lowercase m. The first row shows a solid m with stroke order arrows, followed by a dashed m, a solid m, and a dotted m. The second row shows a dashed m and a solid m. The third row shows a solid m. The fourth row is empty for independent practice.

### Uppercase N



1. Pull down straight
2. Pull down straight
3. Slant right

Trace and write the letter.

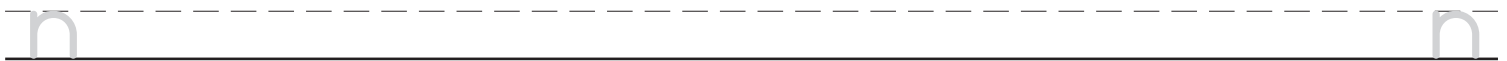
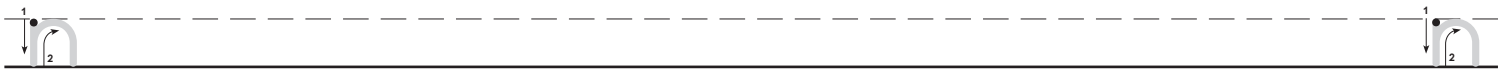


### Lowercase n

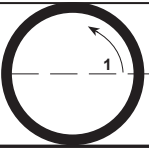


1. Pull down straight
2. Push up, curve right, pull down straight

Trace and write the letter.

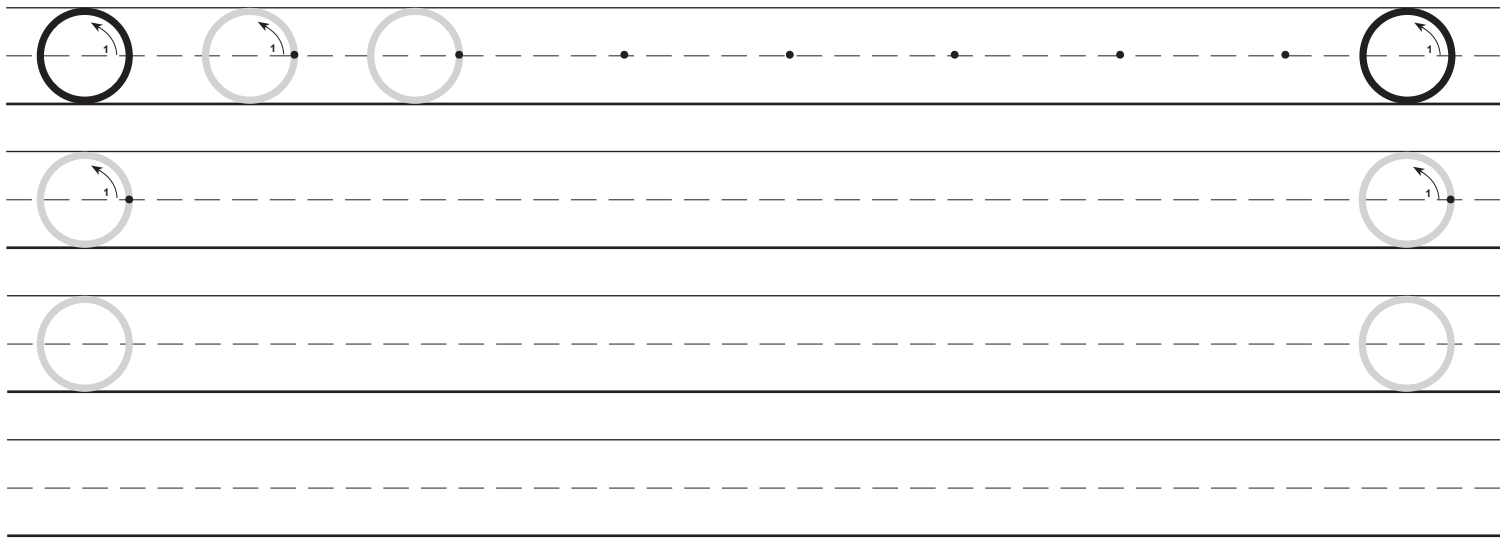


Uppercase ○




1. Circle left

Trace and write the letter.

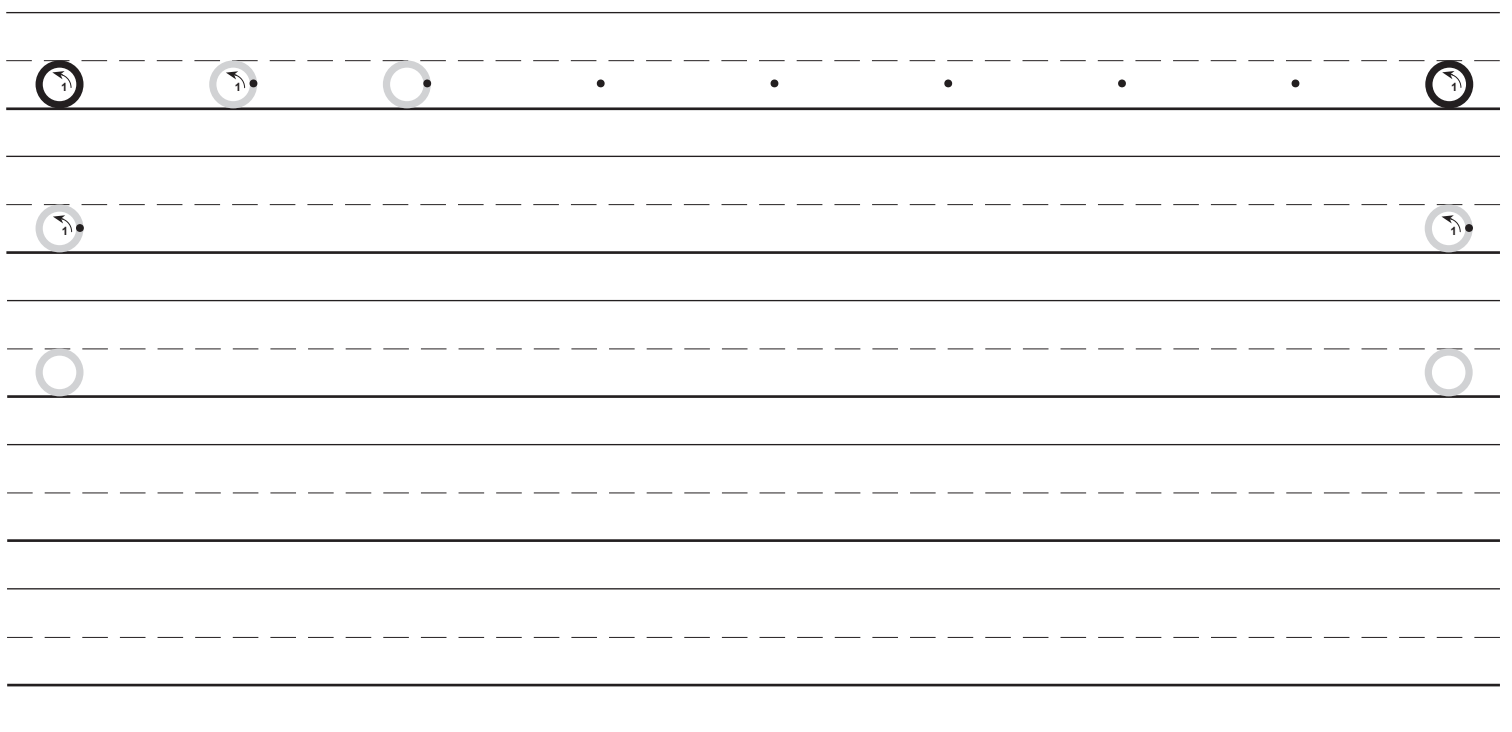


Lowercase ○



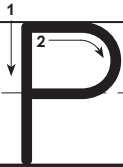
1. Circle left

Trace and write the letter.





### Uppercase P



1. Pull down straight
2. Slide right, curve down, slide left

Trace and write the letter.

Tracing practice for uppercase P. The first row shows a solid P with stroke order arrows, followed by a faded P with stroke order arrows, and then a series of faded P's with starting dots. The second row shows a faded P with stroke order arrows, followed by a faded P with stroke order arrows. The third row shows a faded P. The fourth row is empty for independent practice.

### Lowercase p

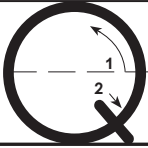


1. Pull down straight
2. Circle right

Trace and write the letter.

Tracing practice for lowercase p. The first row shows a solid p with stroke order arrows, followed by a faded p with stroke order arrows, and then a series of faded p's with starting dots. The second row shows a faded p with stroke order arrows, followed by a faded p with stroke order arrows. The third row shows a faded p. The fourth row is empty for independent practice.

Uppercase Q



1. Circle left
2. Slant right

Trace and write the letter.

Tracing practice for uppercase Q on a three-line grid. The first row contains a solid Q with stroke order arrows, a dashed Q with stroke order arrows, a dashed Q, a dot, a dot, a dot, a dot, and a solid Q with stroke order arrows. The second row contains a dashed Q with stroke order arrows and a dashed Q with stroke order arrows. The third row contains a dashed Q and a dashed Q. Below these are two more empty rows for independent practice.

Lowercase q

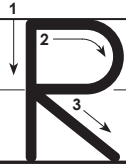


1. Circle left
2. Pull down straight, curve right

Trace and write the letter.

Tracing practice for lowercase q on a three-line grid. The first row contains a solid q with stroke order arrows, a dashed q with stroke order arrows, a dashed q, a dot, a dot, a dot, a dot, a dot, and a solid q with stroke order arrows. The second row contains a dashed q with stroke order arrows and a dashed q with stroke order arrows. The third row contains a dashed q and a dashed q. Below these are two more empty rows for independent practice.

## Uppercase R



1. Pull down straight
2. Slide right, curve down, slide left
3. Slant right

Trace and write the letter.

Tracing practice for uppercase R. The first row shows a solid R with stroke order arrows, followed by a faded R with stroke order arrows, and then a plain R. The second row shows a faded R with stroke order arrows and a plain R. The third row shows a plain R. The fourth row shows a plain R. The fifth row shows a plain R. The sixth row shows a plain R.

## Lowercase r



1. Pull down straight
2. Push up, curve right

Trace and write the letter.

Tracing practice for lowercase r. The first row shows a solid r with stroke order arrows, followed by a faded r with stroke order arrows, and then a plain r. The second row shows a faded r with stroke order arrows and a plain r. The third row shows a plain r. The fourth row shows a plain r. The fifth row shows a plain r. The sixth row shows a plain r.

Uppercase S



1. Curve left, curve down, curve left

Trace and write the letter.

Tracing practice for uppercase 'S'. The first row shows a solid 'S' with stroke order arrows, followed by a faded 'S' with stroke order arrows, and then a plain 'S'. This is followed by five dotted lines for independent practice. The second row shows a faded 'S' with stroke order arrows, followed by a plain 'S', and then four more dotted lines for independent practice.

Lowercase s

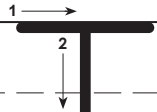


1. Curve left, curve down, curve left

Trace and write the letter.

Tracing practice for lowercase 's'. The first row shows a solid 's' with stroke order arrows, followed by a faded 's' with stroke order arrows, and then a plain 's'. This is followed by five dotted lines for independent practice. The second row shows a faded 's' with stroke order arrows, followed by a plain 's', and then four more dotted lines for independent practice.

## Uppercase T

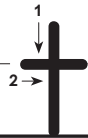


1. Slide right
2. Pull down straight

Trace and write the letter.

Tracing practice for uppercase T. The first row shows a solid T with stroke order arrows (1: right, 2: down), followed by a dashed T with stroke order arrows, and then a solid T. The second row shows a dashed T with stroke order arrows, followed by a solid T. The third and fourth rows each contain two solid T's for independent practice.

## Lowercase t

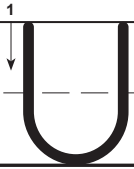


1. Pull down straight
2. Slide right

Trace and write the letter.

Tracing practice for lowercase t. The first row shows a solid t with stroke order arrows (1: down, 2: right), followed by a dashed t with stroke order arrows, and then a solid t. The second row shows a dashed t with stroke order arrows, followed by a solid t. The third and fourth rows each contain two solid t's for independent practice.

Uppercase **U**



1. Pull down straight, curve right, push up straight

Trace and write the letter.

Tracing practice for uppercase 'U'. The first row contains a solid 'U' with stroke order arrows, followed by a faded 'U' with stroke order arrows, and then a series of dots on the top line. The second row contains a faded 'U' with stroke order arrows, followed by a series of dots on the top line. The third row contains a faded 'U' with stroke order arrows, followed by a series of dots on the top line. Below these are several blank sets of three horizontal lines for independent writing practice.

Lowercase **u**

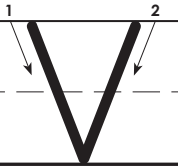


1. Pull down straight, curve right, push up straight
2. Pull down straight

Trace and write the letter.

Tracing practice for lowercase 'u'. The first row contains a solid 'u' with stroke order arrows, followed by a faded 'u' with stroke order arrows, and then a series of dots on the middle-dashed line. The second row contains a faded 'u' with stroke order arrows, followed by a series of dots on the middle-dashed line. The third row contains a faded 'u' with stroke order arrows, followed by a series of dots on the middle-dashed line. Below these are several blank sets of three horizontal lines for independent writing practice.

Uppercase **V**



- 1. Slant right
- 2. Slant left

Trace and write the letter.

Tracing practice for uppercase letter V. The first row contains a solid black 'V', a light grey 'V' with stroke order arrows, a dashed 'V', a dot, and another solid black 'V'. The second row contains a light grey 'V' with stroke order arrows and another light grey 'V'. The third row contains a light grey 'V' and another light grey 'V'. The remaining two rows are empty handwriting lines for independent practice.

Lowercase **v**

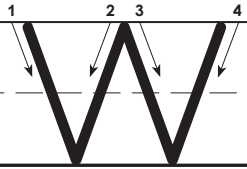


- 1. Slant right
- 2. Slant left

Trace and write the letter.

Tracing practice for lowercase letter v. The first row contains a solid black 'v', a light grey 'v' with stroke order arrows, a dashed 'v', a dot, and another solid black 'v'. The second row contains a light grey 'v' with stroke order arrows and another light grey 'v'. The third row contains a light grey 'v' and another light grey 'v'. The remaining two rows are empty handwriting lines for independent practice.

## Uppercase W



1. Slant right
2. Slant left
3. Slant right
4. Slant left

Trace and write the letter.

Tracing practice for uppercase 'W'. The first row shows a solid 'W' with stroke order arrows and numbers, followed by a light gray 'W' for tracing, and then a dotted 'W' for tracing. The second row shows a light gray 'W' for tracing and a dotted 'W' for tracing. The third row shows a light gray 'W' for tracing. The fourth row shows a dotted 'W' for tracing. The fifth row is blank for independent writing.

## Lowercase w



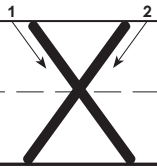
1. Slant right
2. Slant left
3. Slant right
4. Slant left

Trace and write the letter.

Tracing practice for lowercase 'w'. The first row shows a solid 'w' with stroke order arrows and numbers, followed by a light gray 'w' for tracing, and then a dotted 'w' for tracing. The second row shows a light gray 'w' for tracing and a dotted 'w' for tracing. The third row shows a light gray 'w' for tracing. The fourth row shows a dotted 'w' for tracing. The fifth row is blank for independent writing.



Uppercase X

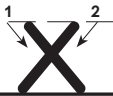


- 1. Slant right
- 2. Slant left

Trace and write the letter.

Tracing practice for uppercase 'X'. The first row contains a solid 'X' with stroke order arrows, a dashed 'X' with stroke order arrows, a dashed 'X' with a starting dot, and a solid 'X' with stroke order arrows. The second row contains a dashed 'X' with stroke order arrows and a dashed 'X' with a starting dot. The third row contains a dashed 'X' with a starting dot and a dashed 'X' with a starting dot. Below these are several blank sets of three horizontal lines for independent writing practice.

Lowercase x

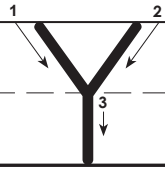


- 1. Slant right
- 2. Slant left

Trace and write the letter.

Tracing practice for lowercase 'x'. The first row contains a solid 'x' with stroke order arrows, a dashed 'x' with stroke order arrows, a dashed 'x' with a starting dot, and a solid 'x' with stroke order arrows. The second row contains a dashed 'x' with stroke order arrows and a dashed 'x' with a starting dot. The third row contains a dashed 'x' with a starting dot and a dashed 'x' with a starting dot. Below these are several blank sets of three horizontal lines for independent writing practice.

## Uppercase Y



1. Slant right
2. Slant left
3. Pull down straight

Trace and write the letter.

Tracing practice for uppercase Y. The first row shows a solid Y with stroke order arrows, a dashed Y for tracing, a dotted Y, and a solid Y. The second row shows a dashed Y for tracing and a dotted Y. The third row shows a dotted Y and a solid Y. The fourth and fifth rows are blank handwriting lines for independent practice.

## Lowercase y

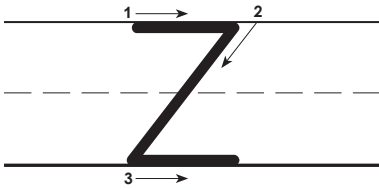


1. Slant right
2. Slant left

Trace and write the letter.

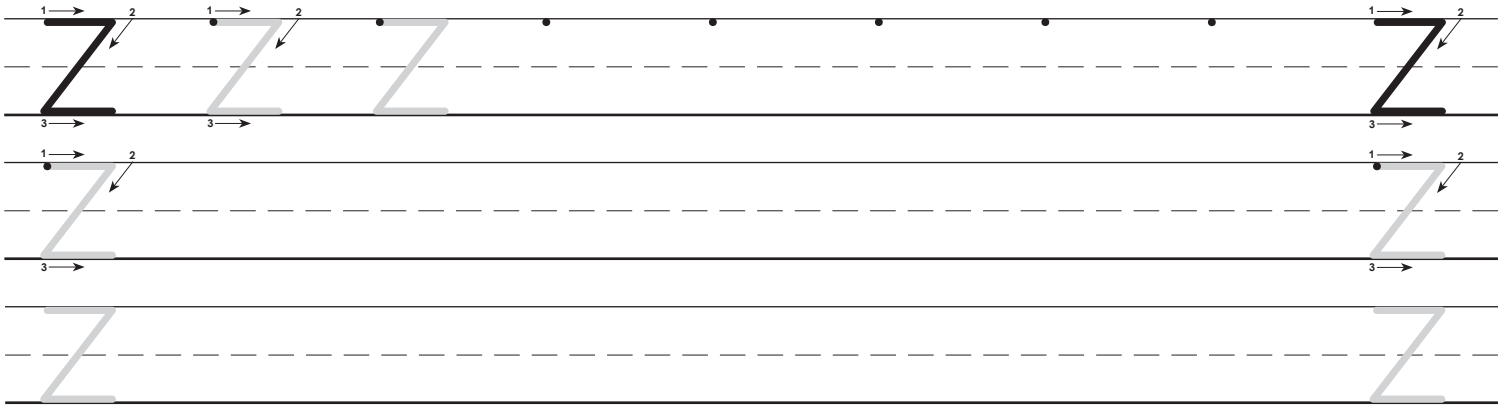
Tracing practice for lowercase y. The first row shows a solid y with stroke order arrows, a dashed y for tracing, a dotted y, and a solid y. The second row shows a dashed y for tracing and a dotted y. The third row shows a dotted y and a solid y. The fourth and fifth rows are blank handwriting lines for independent practice.

### Uppercase Z

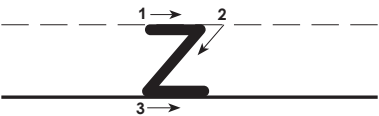


1. Slide right
2. Slant left
3. Slide right

Trace and write the letter.

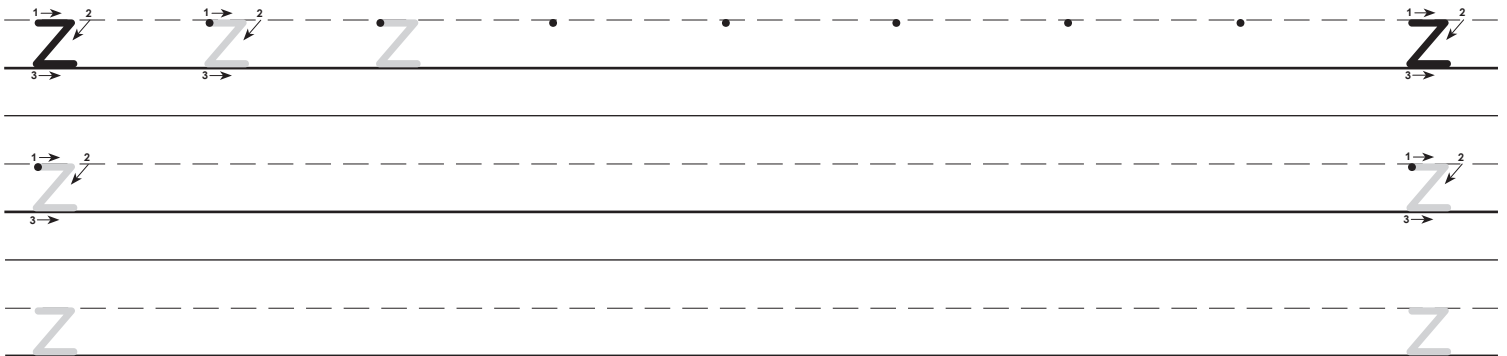


### Lowercase z



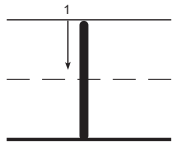
1. Slide right
2. Slant left
3. Slide right

Trace and write the letter.

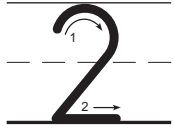
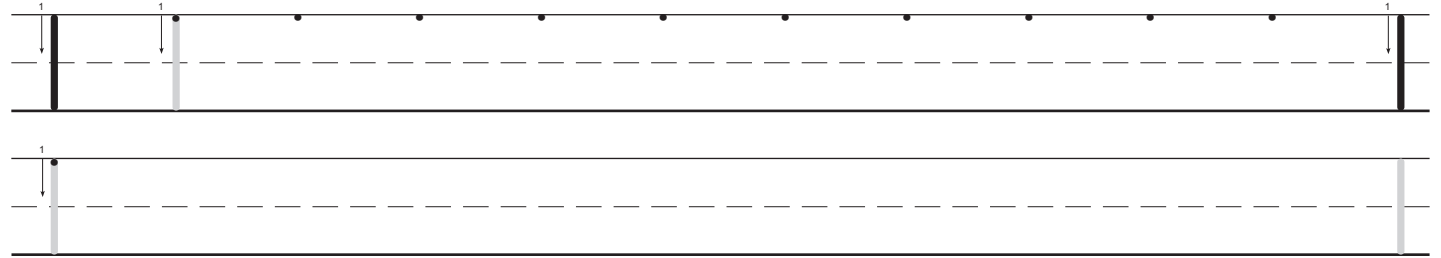


# Writing Numerals

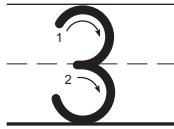
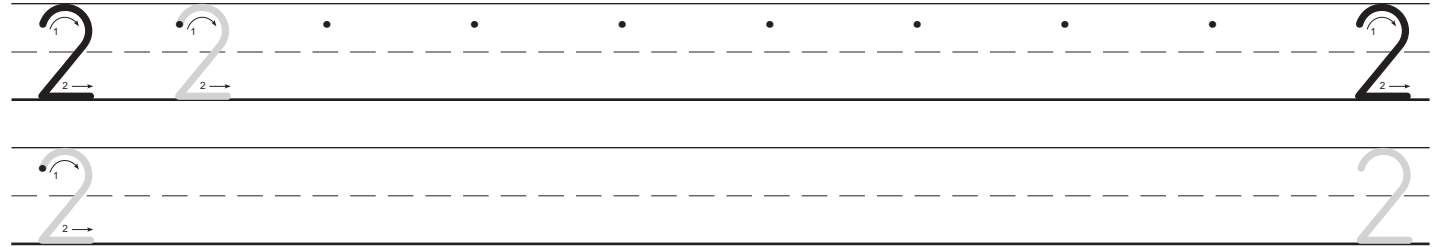
Trace and write the numerals.



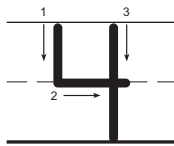
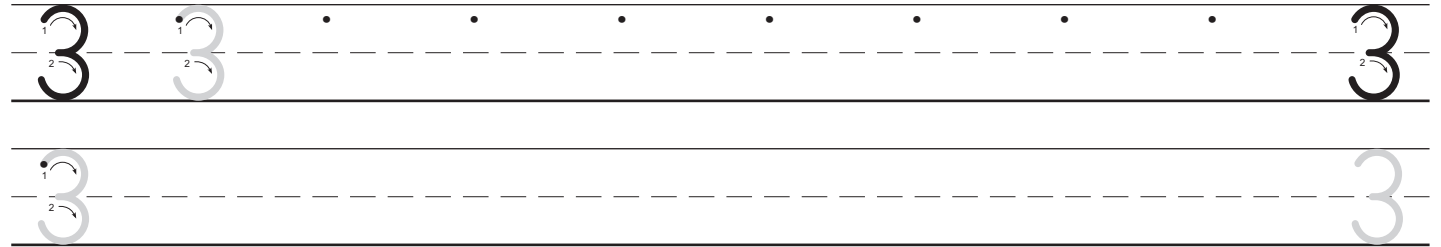
1. Pull down straight



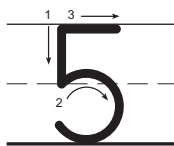
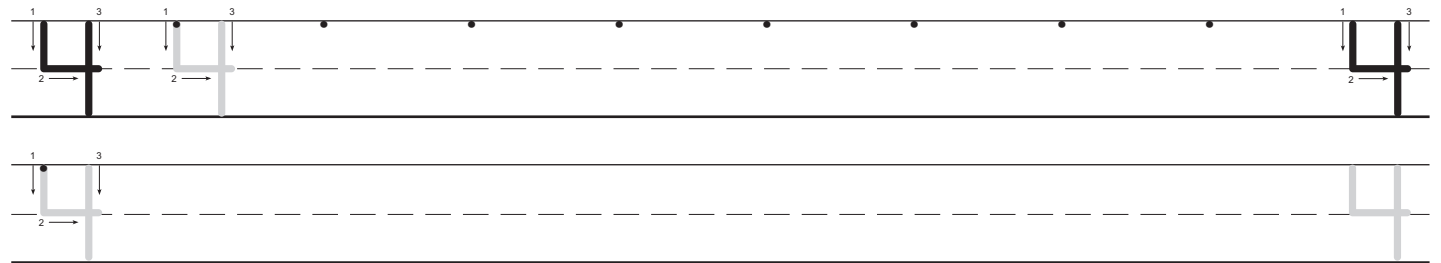
1. Curve right, slant left
2. Slide right



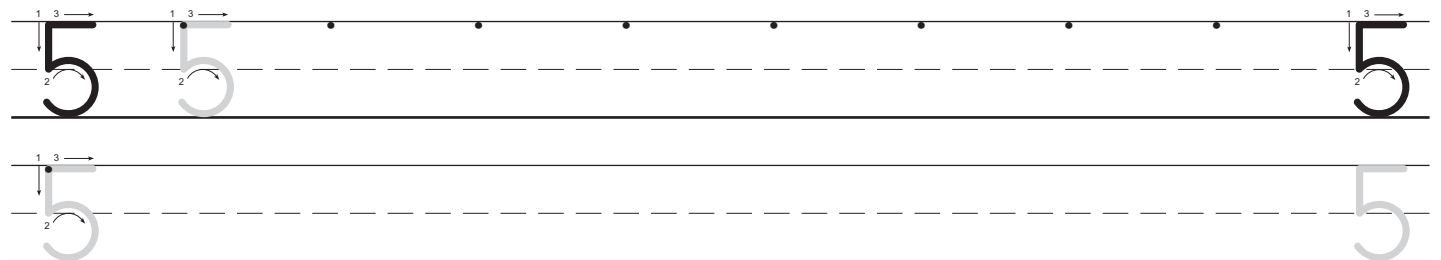
1. Circle right
2. Circle right



1. Pull down straight
2. Slide right
3. Pull down straight

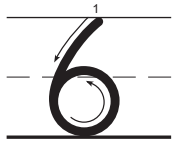


1. Pull down straight
2. Circle right
3. Slide right

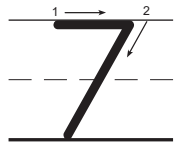
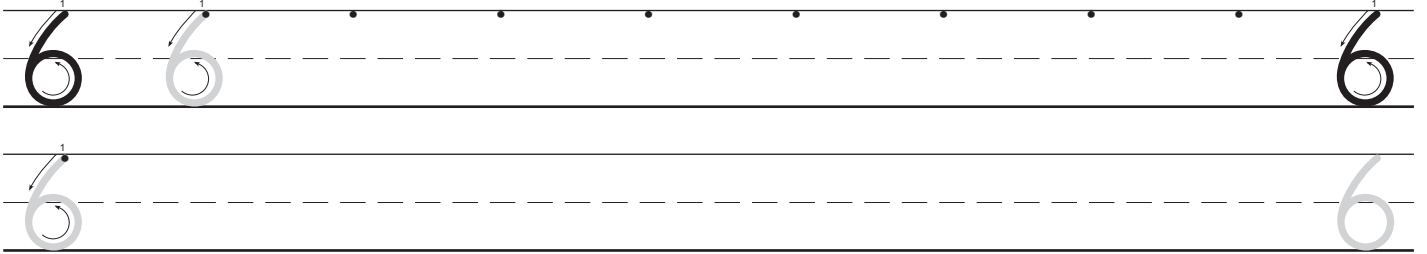


# Writing Numerals

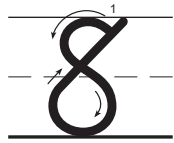
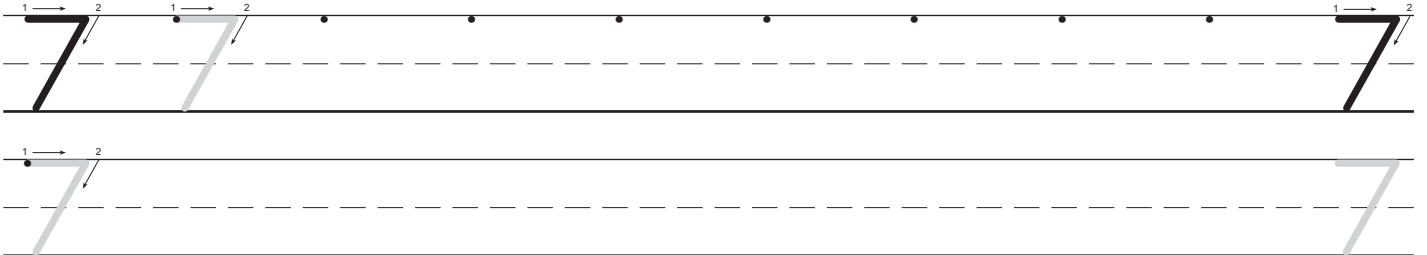
Trace and write the numerals.



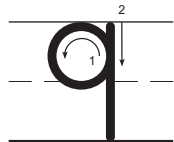
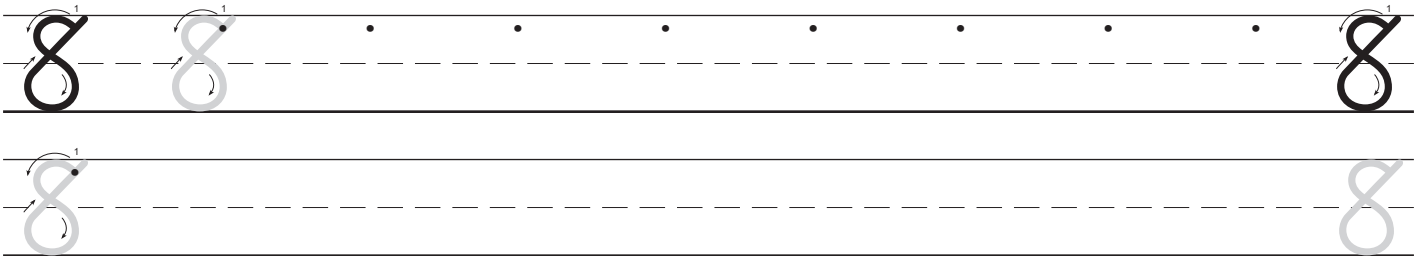
1. Curve down, curve right, curve left (close)



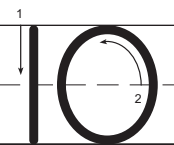
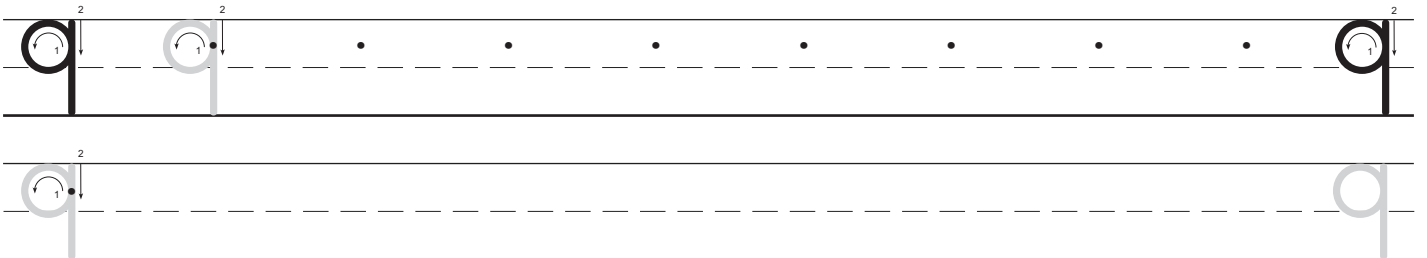
1. Slide right
2. Slant left



1. Curve left, curve down, curve left, slant right



1. Circle left
2. Pull down straight



1. Pull down straight
2. Circle left

